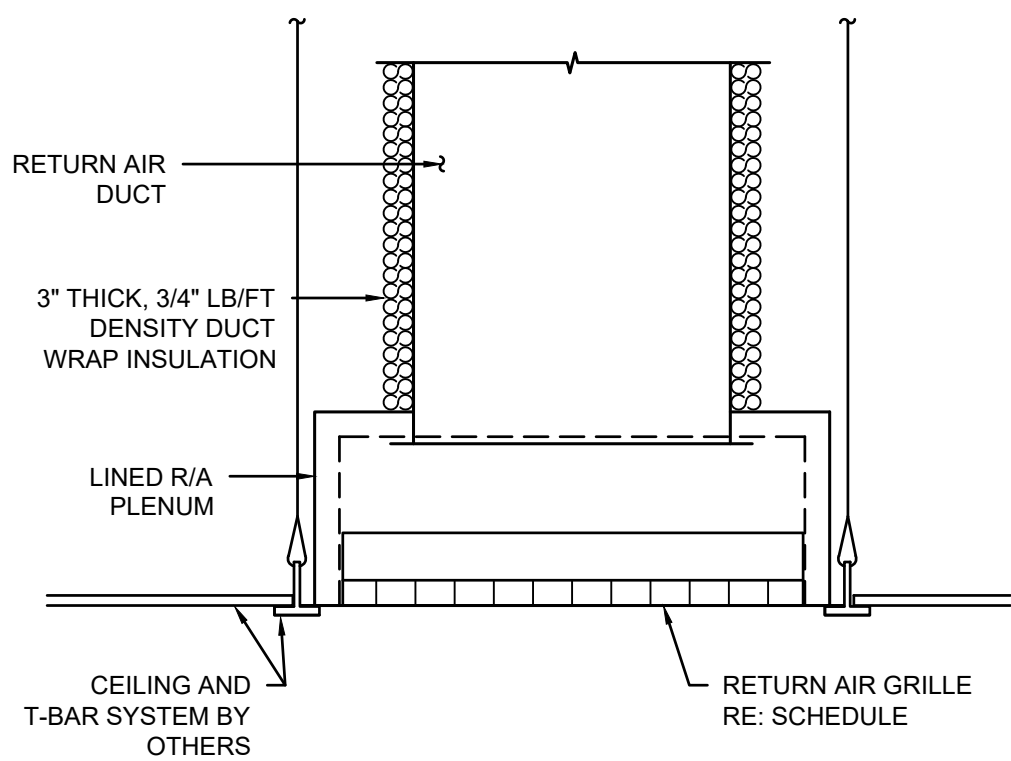
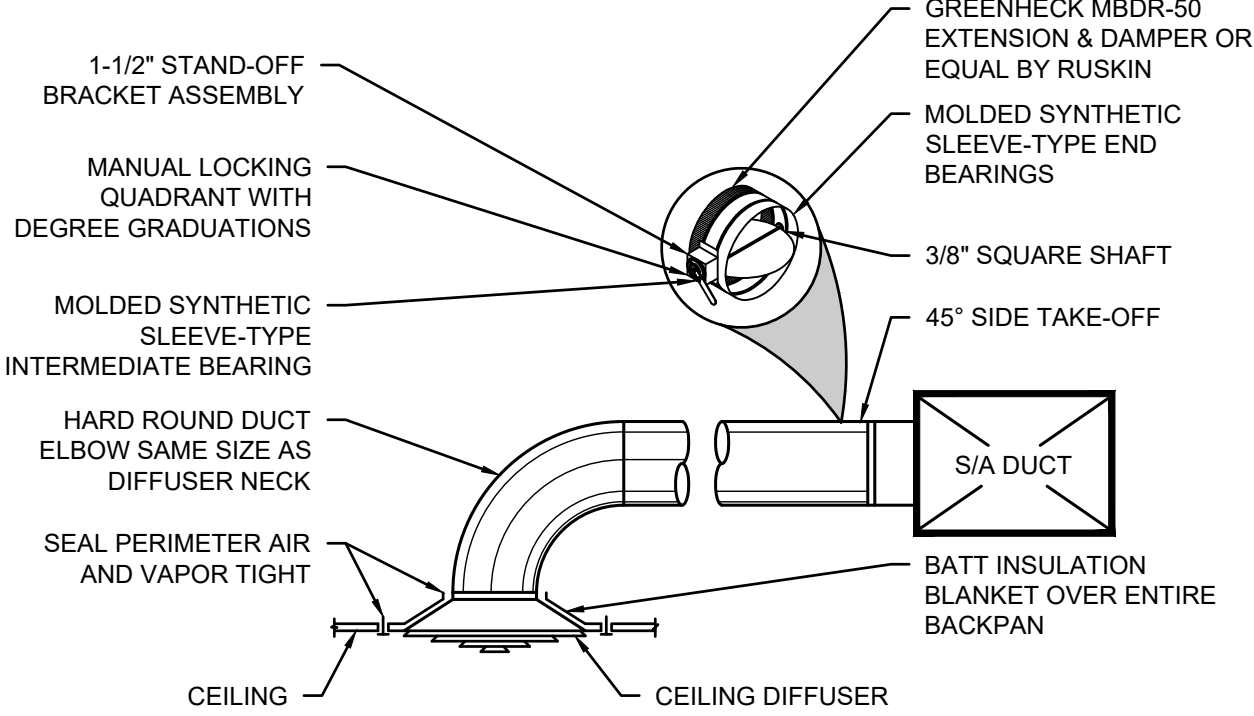


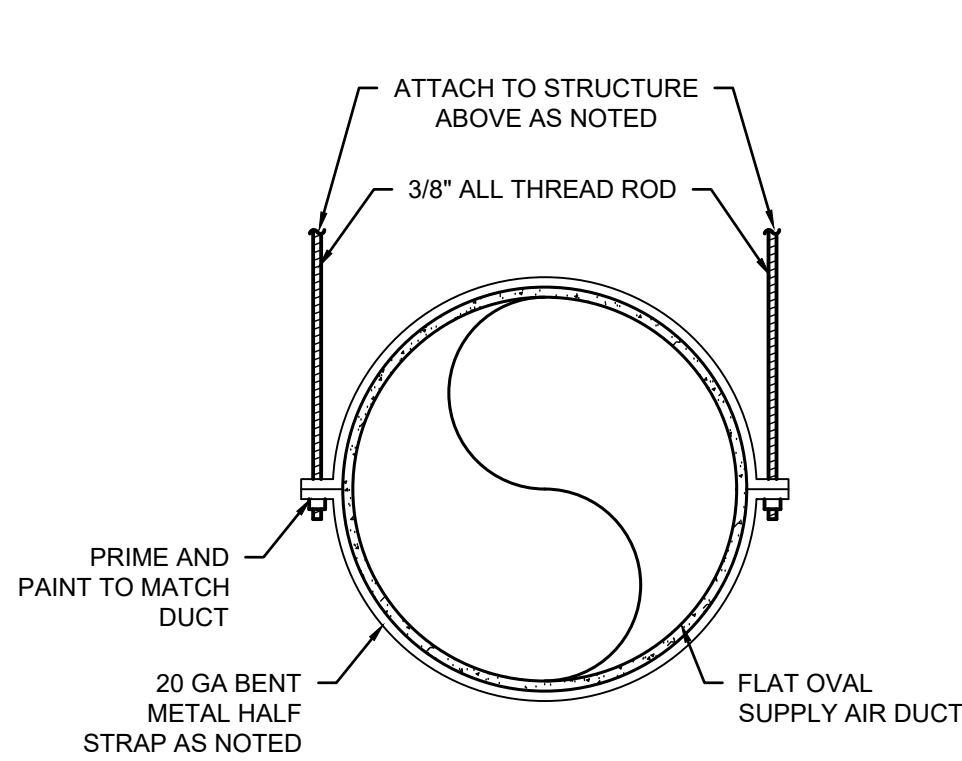
SUPPLY AIR DIFFUSER INSTALLATION
NOT TO SCALE (RIGID CEILING SIMILAR)



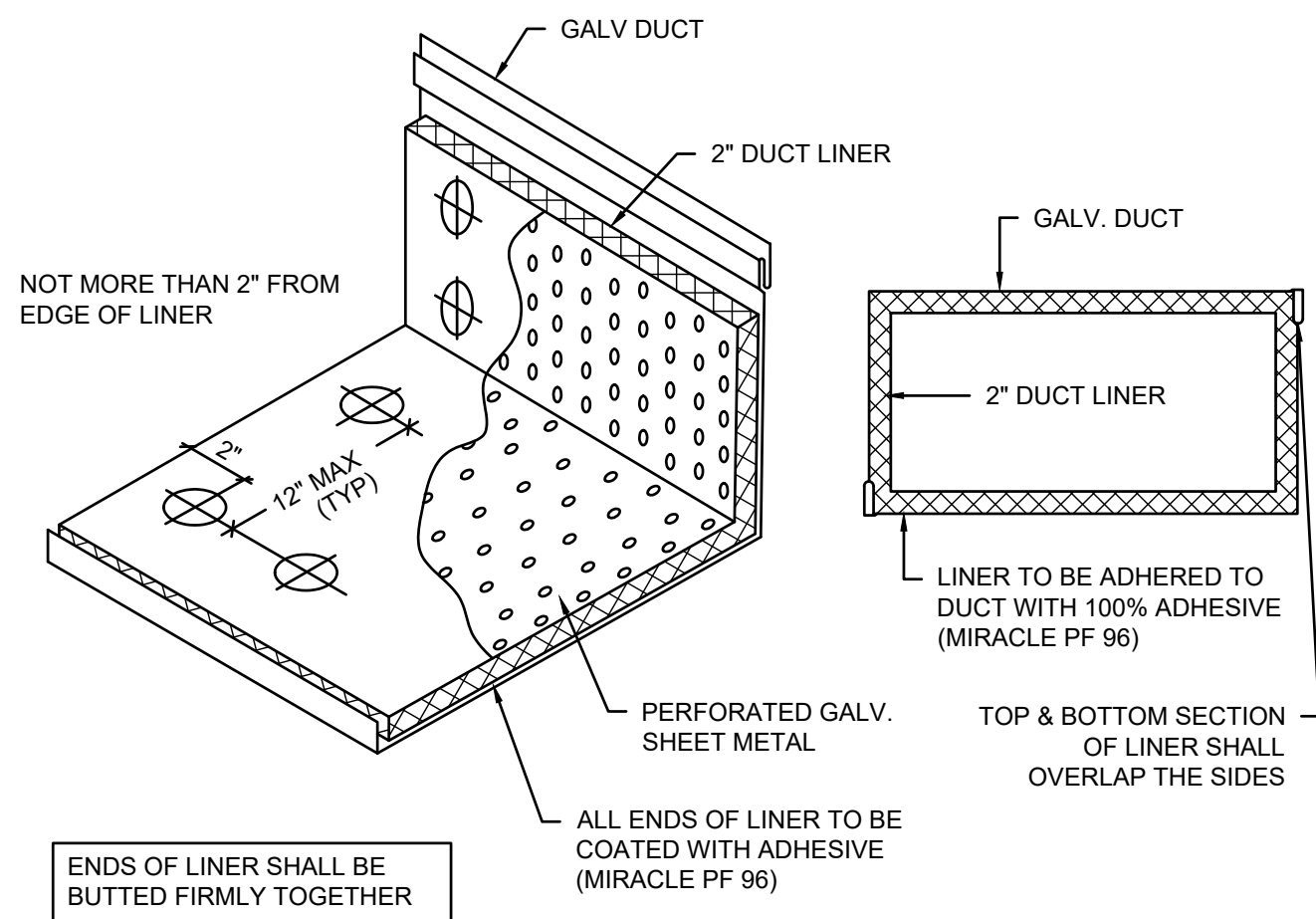
RETURN AIR GRILLE INSTALLATION
NOT TO SCALE (RIGID CEILING SIMILAR)



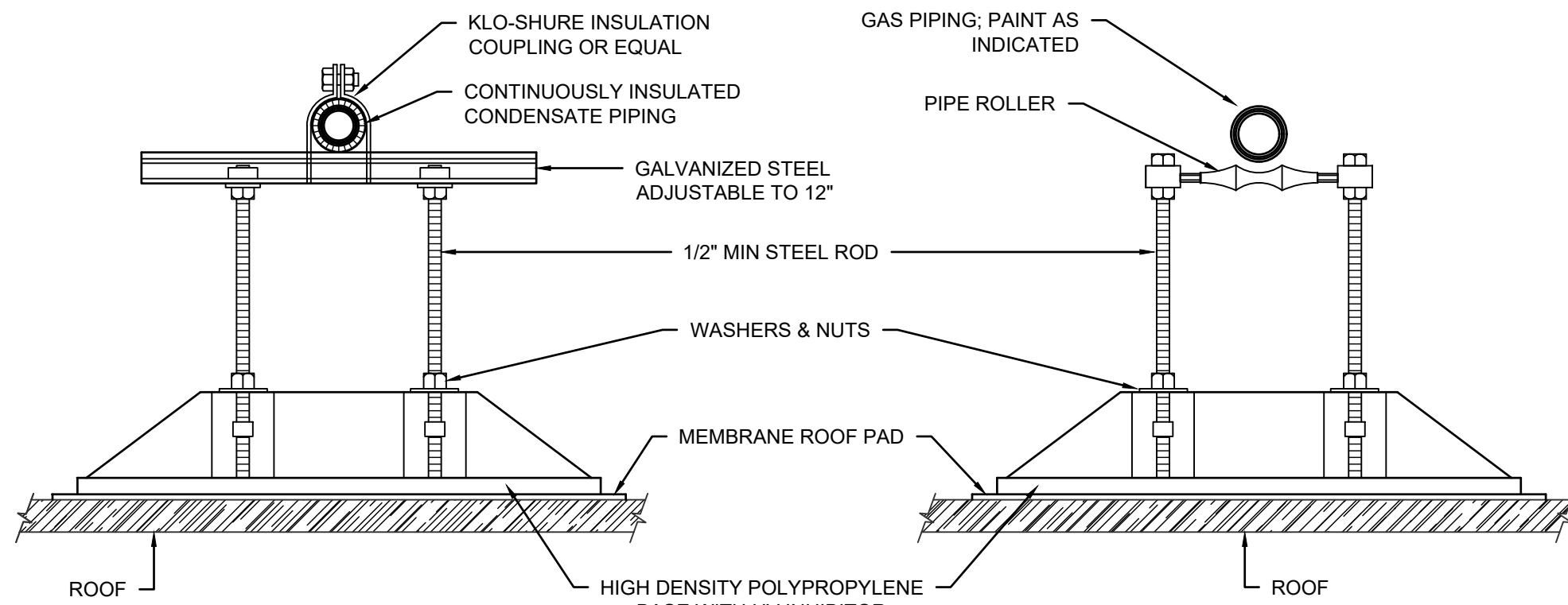
DIFFUSER CONNECTION
NOT TO SCALE



EXPOSED DUCT SUPPORT
NOT TO SCALE

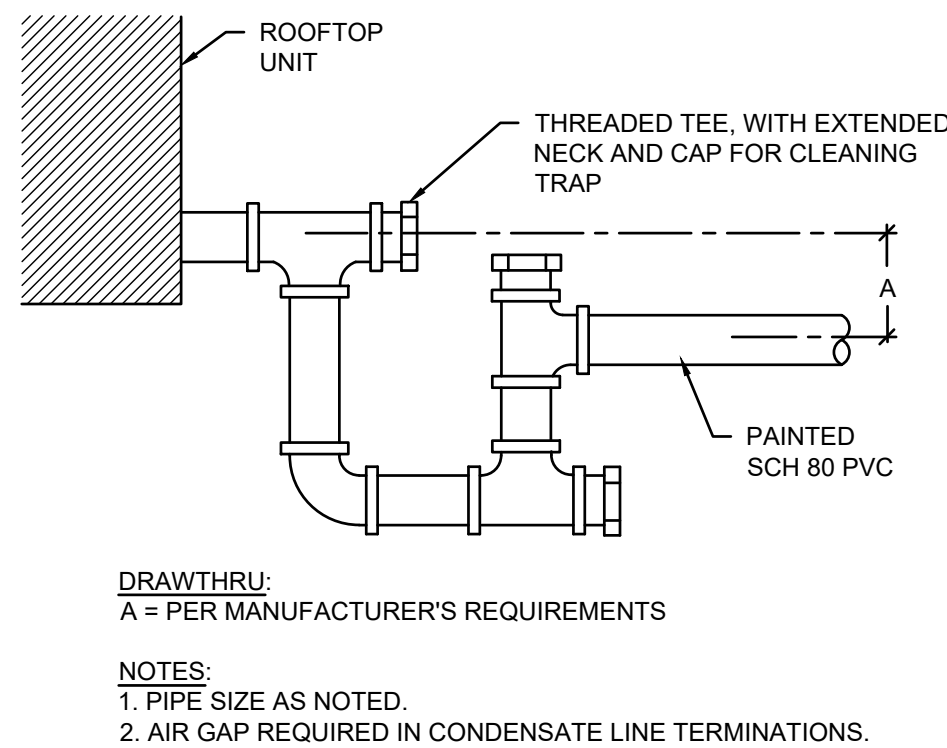


DUCT LINER INSTALLATION
NOT TO SCALE

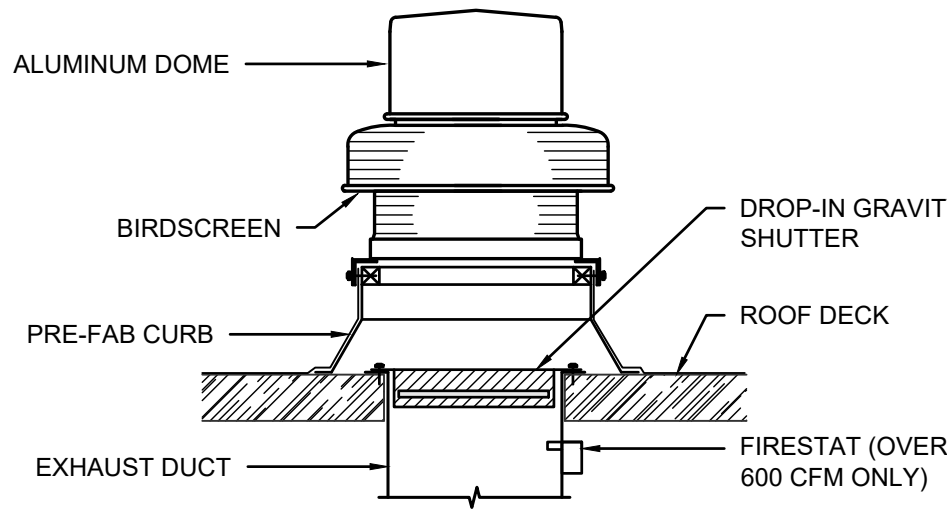


CONDENSATE/GAS PIPE & SUPPORT ON ROOF
NOT TO SCALE

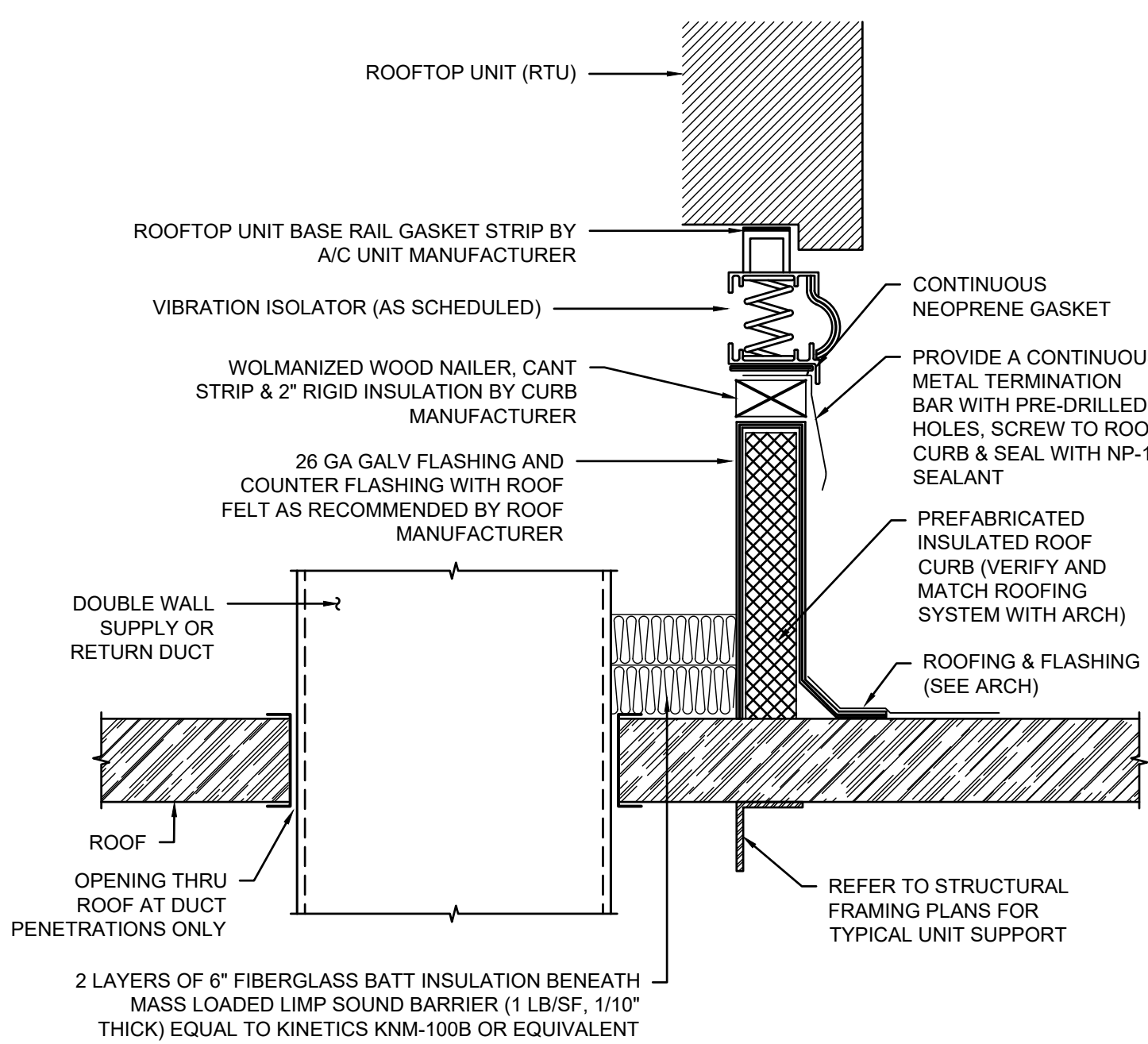
- NOTES:
1. PROVIDE ROOF PAD AS RECOMMENDED BY ROOFING MANUFACTURER.
 2. PIPE SUPPORT SHALL BE PORTABLE PIPE HANGERS, INC. MODEL SS-8C FOR CONDENSATE PIPING & SS-8R FOR GAS PIPING. ALTERNATE BRANDS, INCLUDE, BUT LIMITED TO MAPA, MIRO OR APPROVED EQUAL.
 3. ALL METAL RODS, WASHERS, NUTS, BOLTS, CLAMPS, ETC. SHALL BE HOT DIPPED GALVANIZED (ASTM A123).
 4. SUPPORTS SIZED AND SPACED AS NOTED.
 5. MINIMUM BASE SIZE IS 10"x16".
 6. PIPE SIZES 2-1/2" AND SMALLER COMBINED ON SAME BASE.



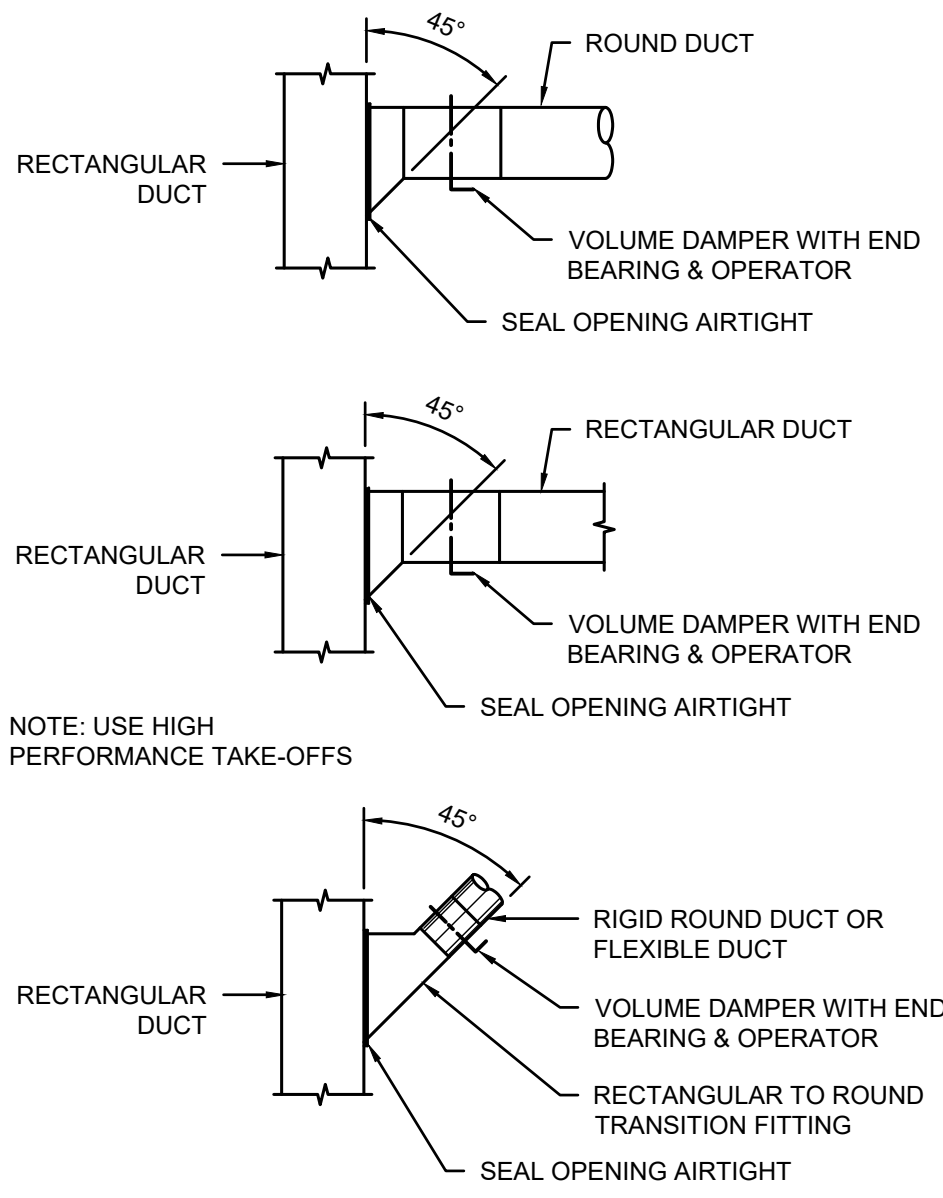
RTU CONDENSATE DRAIN TRAP
NOT TO SCALE (EXTERIOR)



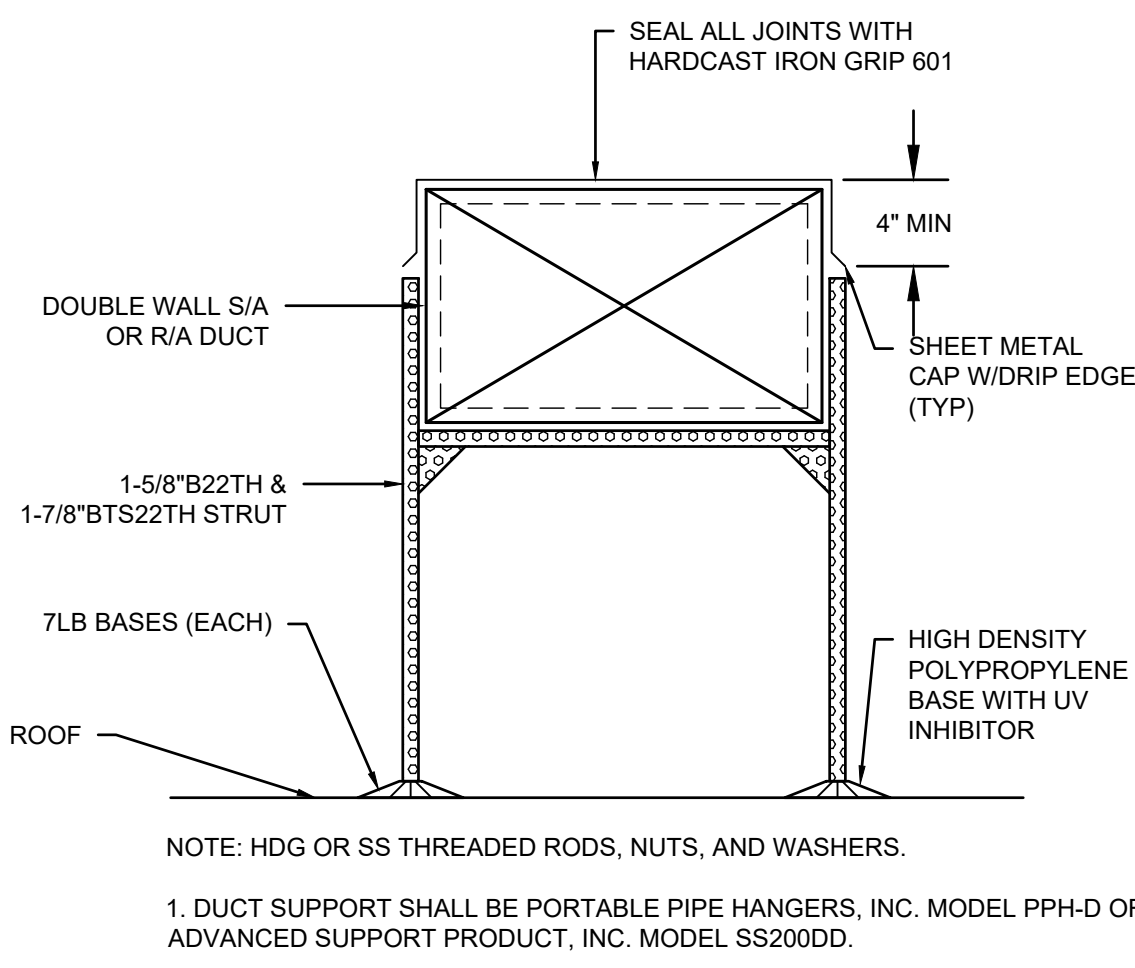
ROOF MOUNTED EXHAUST FAN
NOT TO SCALE



RTU CURB WITH VIBRATION ISOLATION
NOT TO SCALE



DUCT TAKE-OFFS
NOT TO SCALE



EXTERNAL DUCT DETAIL
NOT TO SCALE

TBA STUDIO
ARCHITECTURE
103 Cypress Street
West Monroe, LA 71291
Tel. 318.340.1550
Fax. 318.998.1315
www.tbastudio.com

TBA

SCHOOL OF CONSTRUCTION PRACTICE
LAB BUILDING, UNIVERSITY OF
LOUISIANA MONROE
507 Filhiol Ave, Monroe, LA 71203

DRAWING REVISIONS

No.	Description	Date

DRAWN BY: CDR
CHECKED BY: RHB
SHEET

M5.01

DESCRIPTION:
MECHANICAL
DETAILS

ROGER H. BARNES
License No. 35843
PROFESSIONAL ENGINEER
11.03.25

CONSULTING ENGINEERS
3003 KNIGHT STREET, SUITE 120
SHREVEPORT, LOUISIANA 71105
phone: 318-425-7452 fax: 318-425-4022
www.AFJMc.com

ENGINEER: ROGER H. BARNES, P.E.
LICENSE NO. 35843

THESE DRAWINGS DO NOT INCLUDE NECESSARY COMPONENTS FOR CONSTRUCTION SAFETY. 25-033